
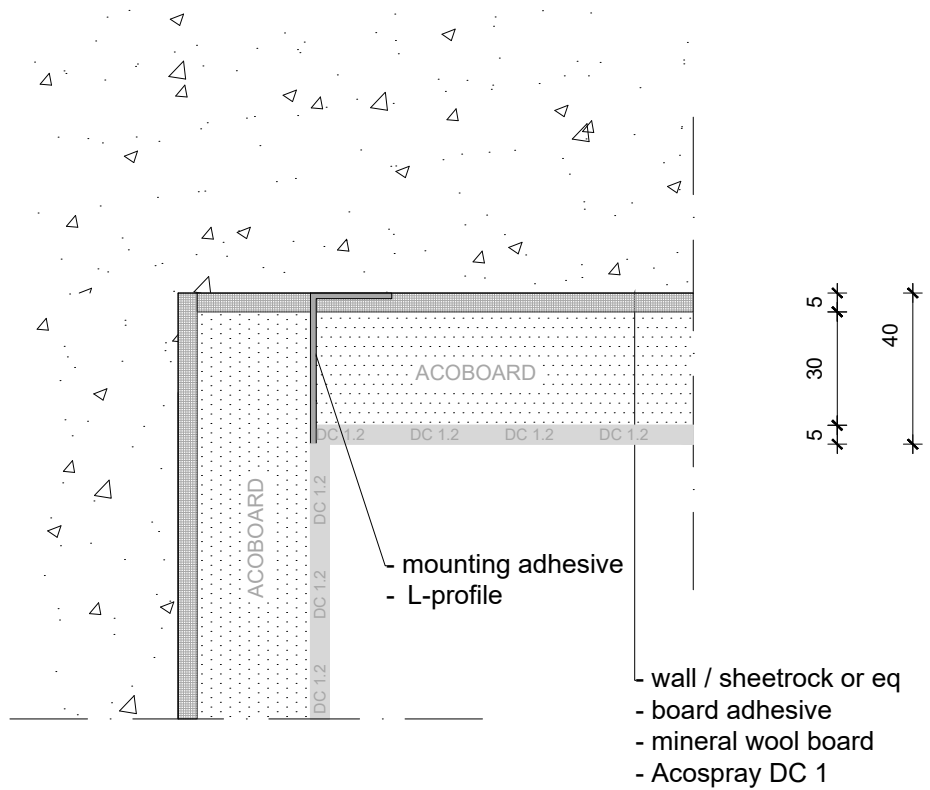


**NOTE:**

- Acosorb products always need to be applied accordingly to the instructions by Acosorb on clean, dry and non expanding surfaces like concrete, gypsum or eq  
Dimensions of profiles and other products depends on the applied thickness of Acosorb product.


Product:	ACOSPRAY DC1 2.0 STANDARD ENDING	Date:	V1.0 2019	info@acosorb.com
Scale:	1:2	Drawn by:	ACOSORB	WWW.ACOSORB.COM
Papersize:	A4			 seamless acoustical spray- and plasterwork

\* These details are basic principle drawings. This drawing does not function as or will replace any execution drawings.  
The client or contractor is responsible for the correct application of the product. All dimensions need to be checked by client or contractor.

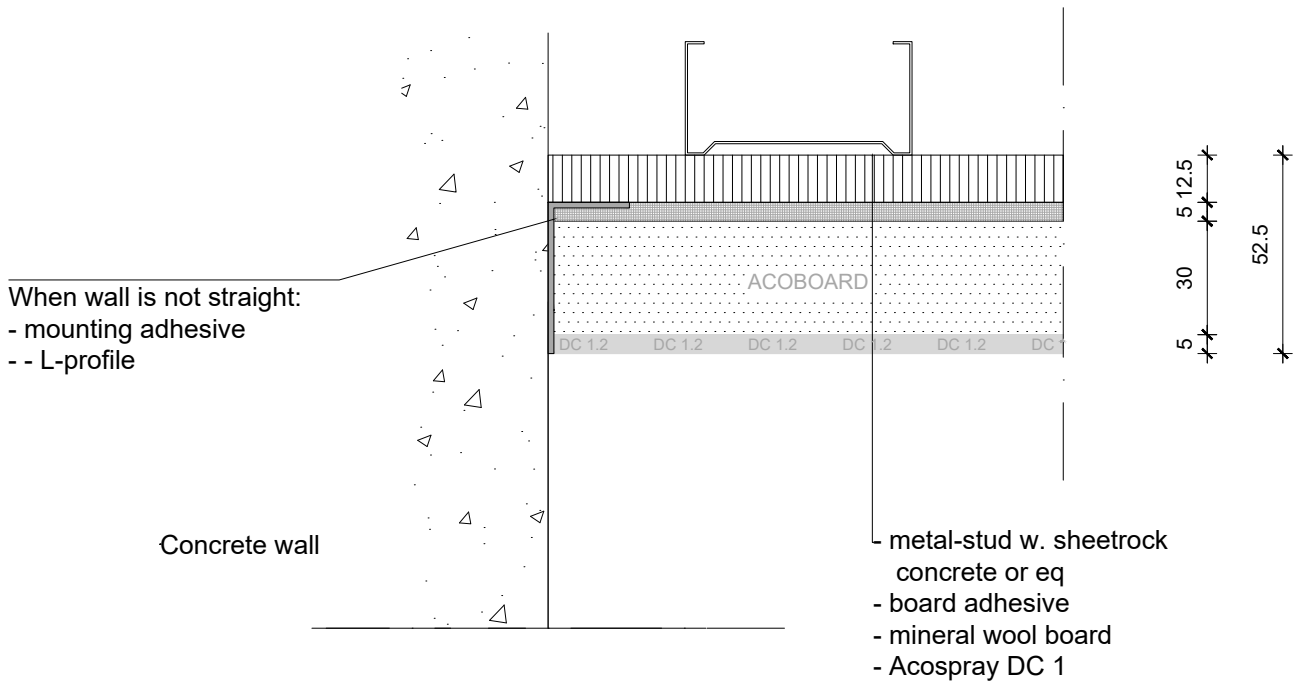
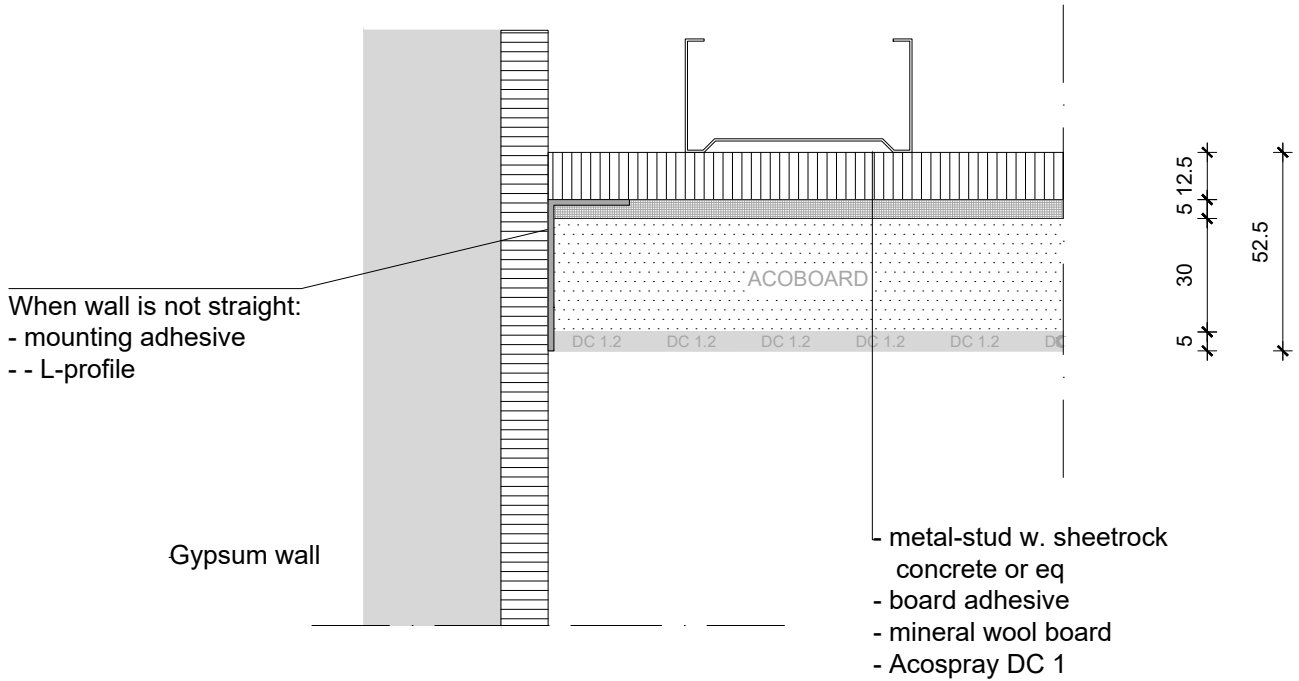


**NOTE:**

- Acosorb products always need to be applied accordingly to the instructions by Acosorb on clean, dry and non expanding surfaces like concrete, gypsum or eq  
Dimensions of profiles and other products depends on the applied thickness of Acosorb product.


Product:	ACOSPRAY DC 1 2.0 INTERNAL CORNER	Date:	V1.0 2019	info@acosorb.com
Scale:	1:2	Drawn by:	ACOSORB	WWW.ACOSORB.COM
Papersize:	A4			 seamless acoustical spray- and plasterwork

\* These details are basic principle drawings. This drawing does not function as or will replace any execution drawings.  
The client or contractor is responsible for the correct application of the product. All dimensions need to be checked by client or contractor.

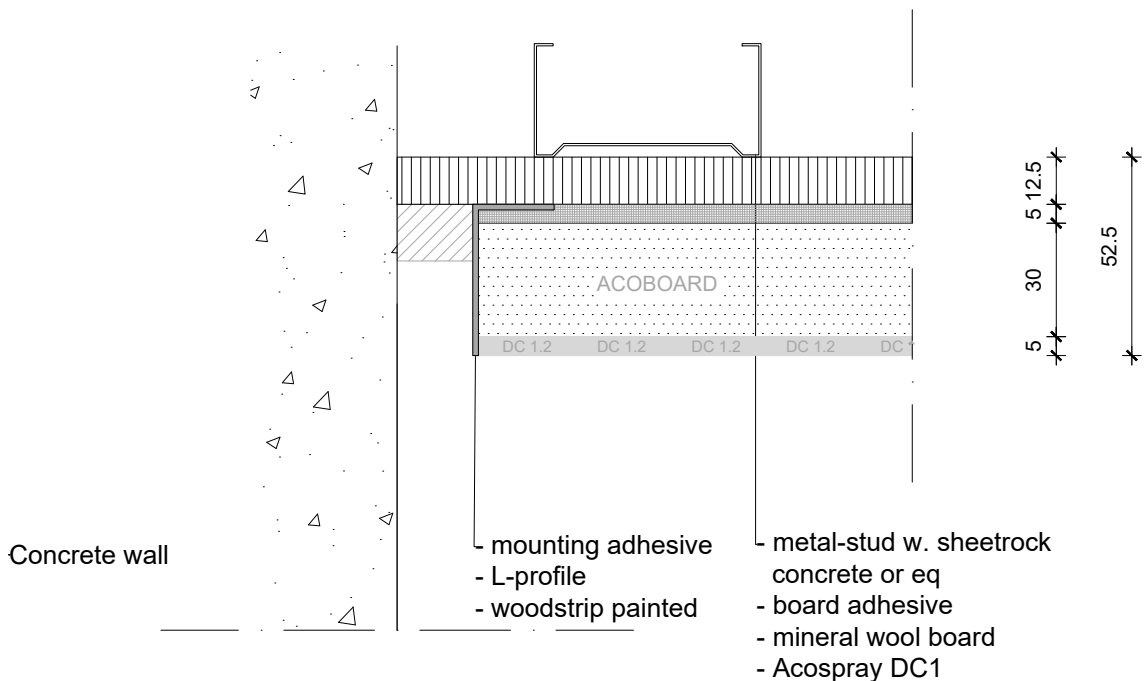
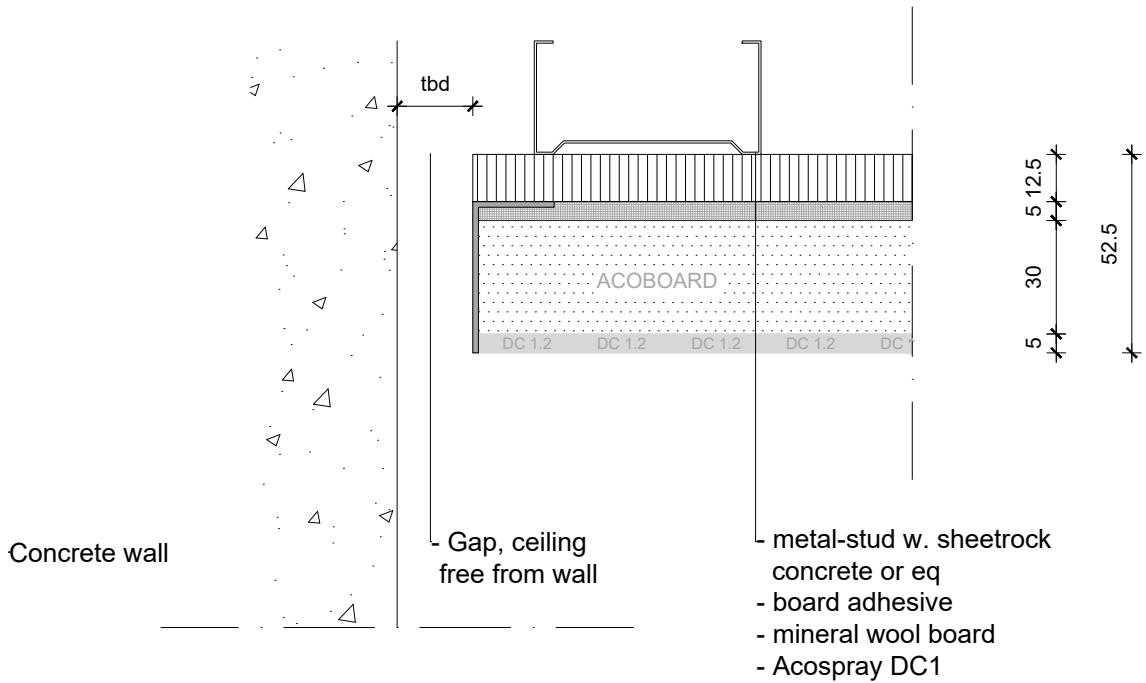


**NOTE:**

- Acosorb products always need to be applied accordingly to the instructions by Acosorb on clean, dry and non expanding surfaces like concrete, gypsum or eq  
 Dimensions of profiles and other products depends on the applied thickness of Acosorb product.


Product:	ACOSPRAY DC 1 2.0 WALL CONNECTION	Date:	V1.0 2019	info@acosorb.com
Scale:	1:2	Drawn by:	ACOSORB	WWW.ACOSORB.COM
Papersize:	A4	 seamless acoustical spray- and plasterwork		

\* These details are basic principle drawings. This drawing does not function as or will replace any execution drawings.  
 The client or contractor is responsible for the correct application of the product. All dimensions need to be checked by client or contractor.

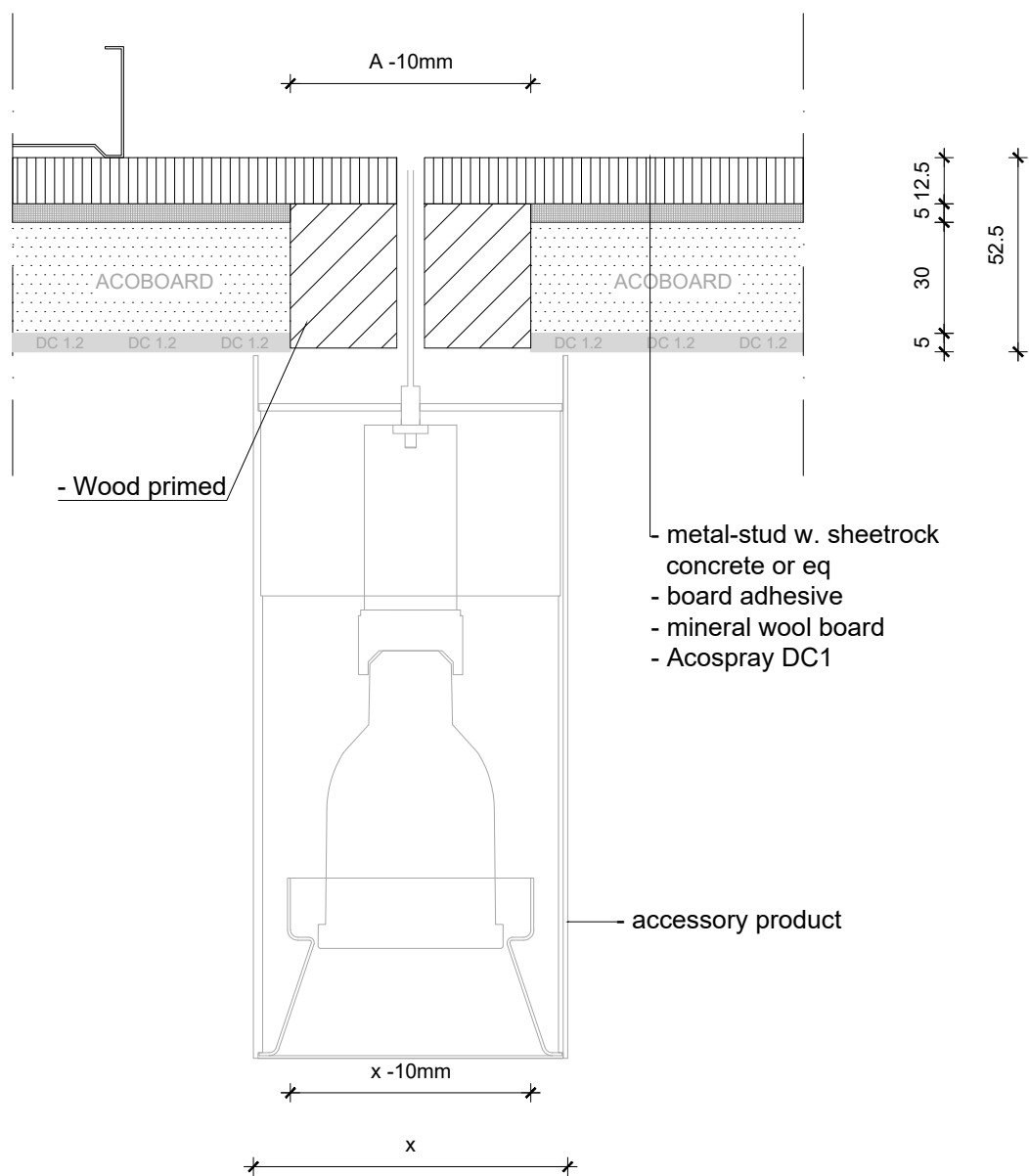


**NOTE:**

- Acosorb products always need to be applied accordingly to the instructions by Acosorb on clean, dry and non expanding surfaces like concrete, gypsum or eq  
Dimensions of profiles and other products depends on the applied thickness of Acosorb product.


Product:	ACOSPRAY DC 1 2.0 WALL/SHADOW JOINT	Date:	V1.0 2019	info@acosorb.com
Scale:	1:2	Drawn by:	ACOSORB	WWW.ACOSORB.COM
Papersize:	A4	 seamless acoustical spray- and plasterwork		

\* These details are basic principle drawings. This drawing does not function as or will replace any execution drawings.  
The client or contractor is responsible for the correct application of the product. All dimensions need to be checked by client or contractor.

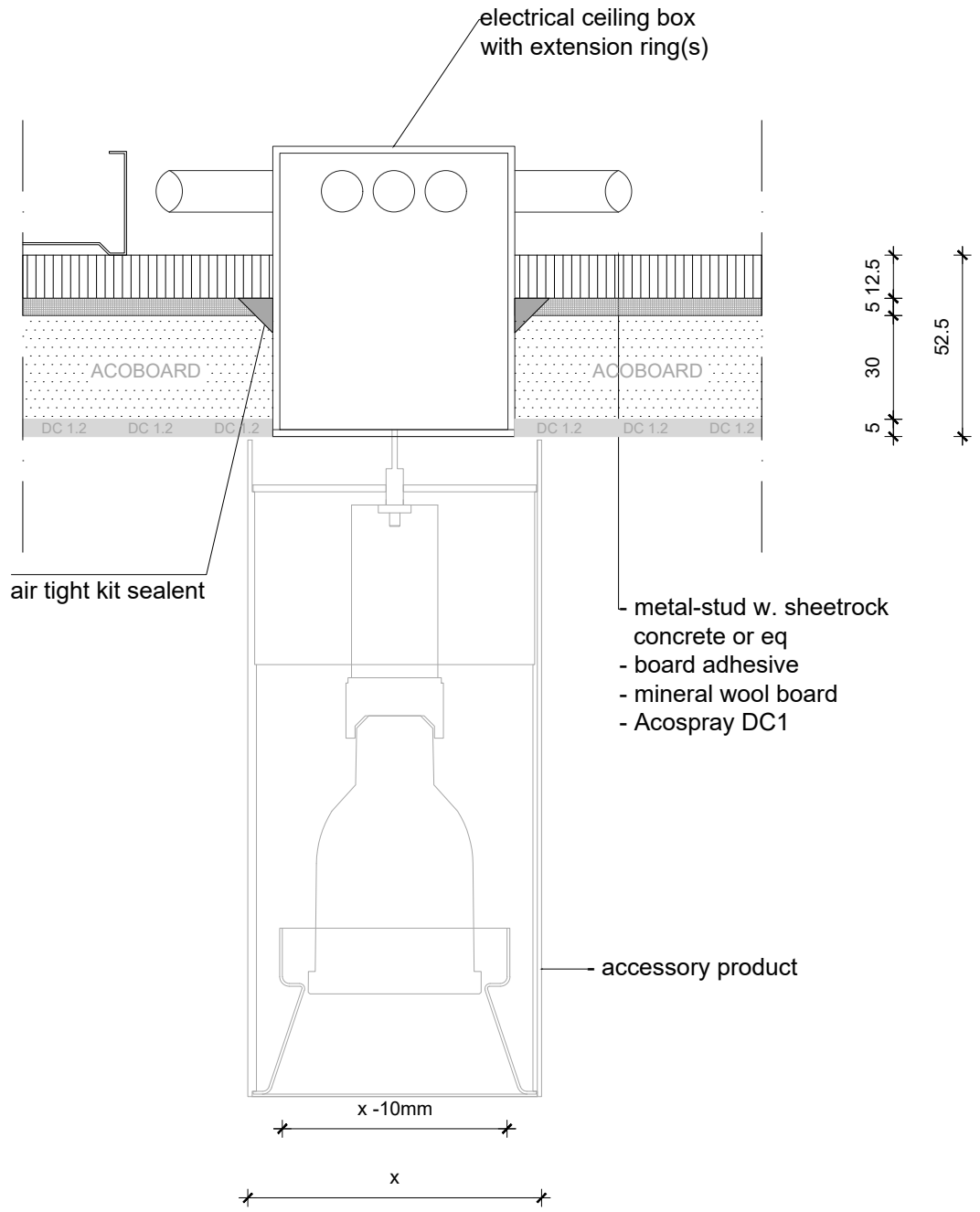


**NOTE:**

- Acosorb products always need to be applied accordingly to the instructions by Acosorb on clean, dry and non expanding surfaces like concrete, gypsum or eq  
 Dimensions of profiles and other products depends on the applied thickness of Acosorb product.


Product:	ACOSPRAY DC 1 2.0 CEILING SURFACE MOUNTED	Date:	V1.0 2019	info@acosorb.com
Scale:	1:2	Drawn by:	ACOSORB	WWW.ACOSORB.COM
Papersize:	A4			 seamless acoustical spray- and plasterwork

\* These details are basic principle drawings. This drawing does not function as or will replace any execution drawings.  
 The client or contractor is responsible for the correct application of the product. All dimensions need to be checked by client or contractor.

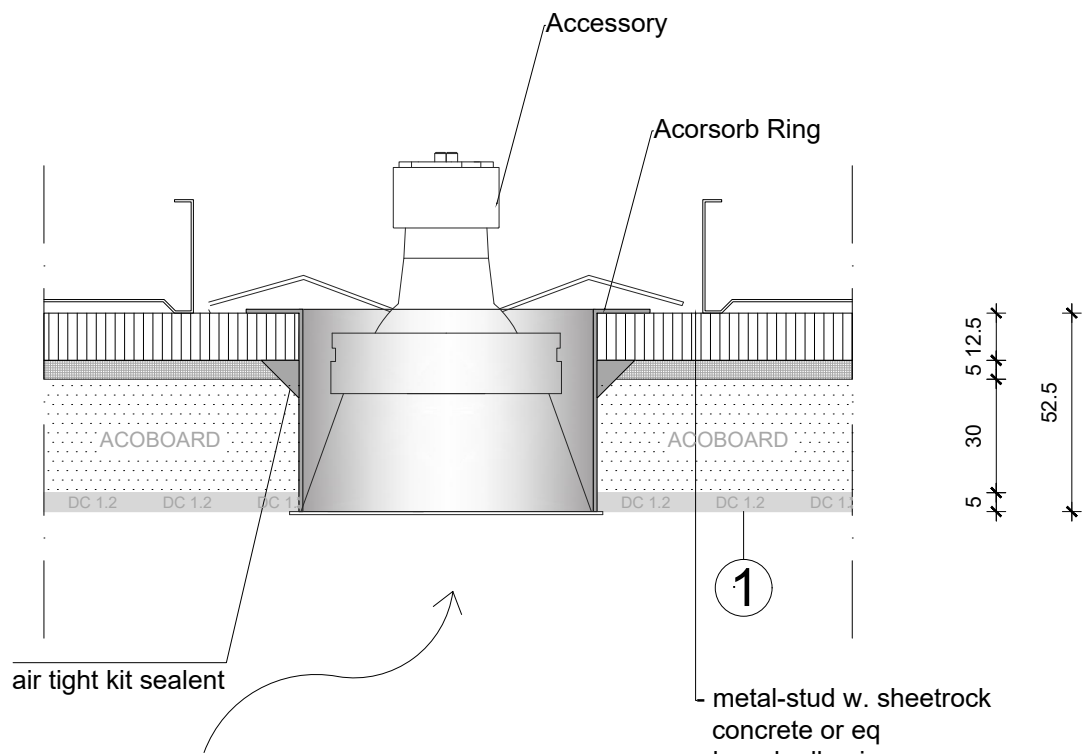


**NOTE:**

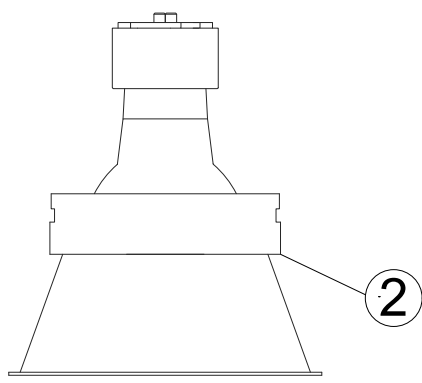
- Acosorb products always need to be applied accordingly to the instructions by Acosorb on clean, dry and non expanding surfaces like concrete, gypsum or eq  
Dimensions of profiles and other products depends on the applied thickness of Acosorb product.

Product:	ACOSPRAY DC 1 2.0 ELECTRICAL CEILING BOX	Date:	V1.0 2019	info@acosorb.com
Scale:	1:2	Drawn by:	ACOSORB	WWW.ACOSORB.COM
Papersize:	A4	 seamless acoustical spray- and plasterwork		

\* These details are basic principle drawings. This drawing does not function as or will replace any execution drawings. The client or contractor is responsible for the correct application of the product. All dimensions need to be checked by client or contractor.




- metal-stud w. sheetrock
- concrete or eq
- board adhesive
- mineral wool board
- Acospray DC1

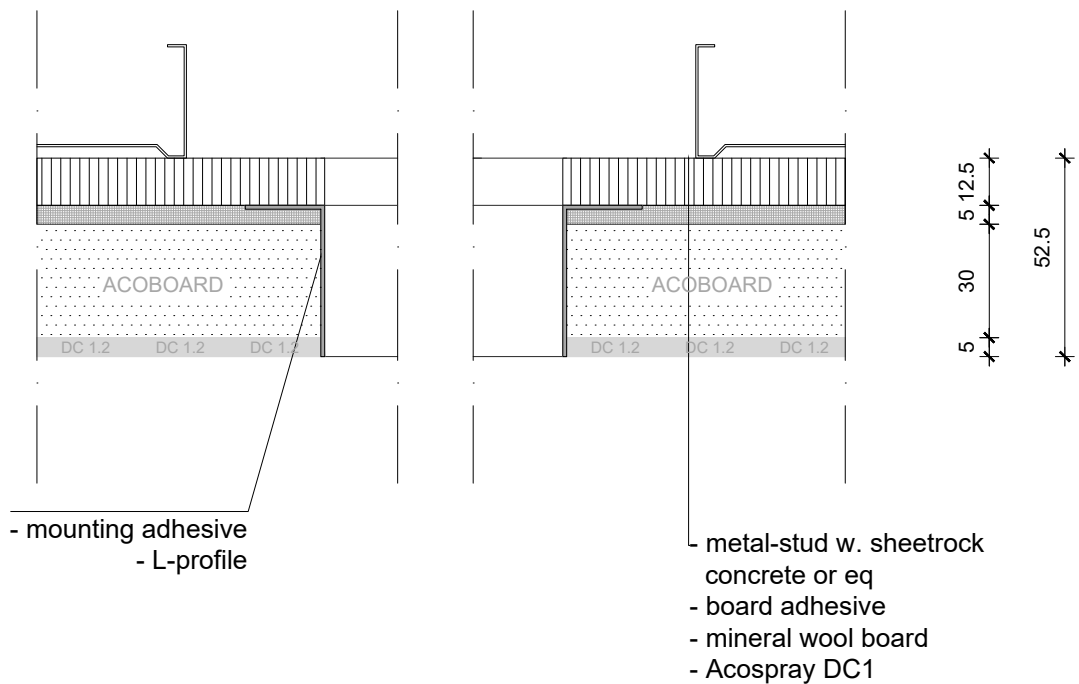


1 - spray ceiling  
2 - place accessory

**NOTE:**  
 - Acosorb products always need to be applied accordingly to the instructions by Acosorb on clean, dry and non expanding surfaces like concrete, gypsum or eq  
 Dimensions of profiles and other products depends on the applied thickness of Acosorb product.


Product:	ACOSPRAY DC 1 2.0 ACOSORB RING	Date:	V1.0 2019	info@acosorb.com
Scale:	1:2	Drawn by:	ACOSORB	WWW.ACOSORB.COM
Papersize:	A4	 seamless acoustical spray- and plasterwork		

\* These details are basic principle drawings. This drawing does not function as or will replace any execution drawings. The client or contractor is responsible for the correct application of the product. All dimensions need to be checked by client or contractor.



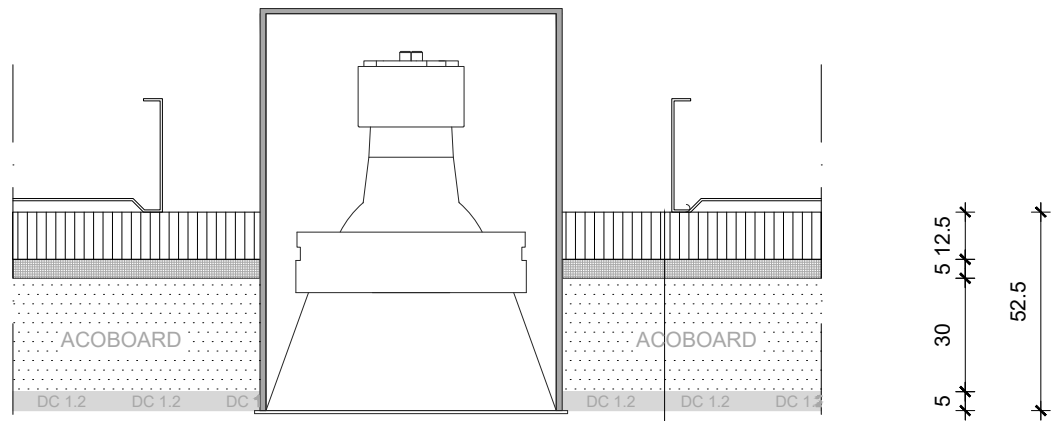
**NOTE:**

- Acosorb products always need to be applied accordingly to the instructions by Acosorb on clean, dry and non expanding surfaces like concrete, gypsum or eq  
 Dimensions of profiles and other products depends on the applied thickness of Acosorb product.

Product:	ACOSPRAY DC 1 2.0 RECTANGULAR OPENING	Date:	V1.0 2019	info@acosorb.com
Scale:	1:2	Drawn by:	ACOSORB	WWW.ACOSORB.COM
Papersize:	A4			 seamless acoustical spray- and plasterwork

\* These details are basic principle drawings. This drawing does not function as or will replace any execution drawings.  
 The client or contractor is responsible for the correct application of the product. All dimensions need to be checked by client or contractor.






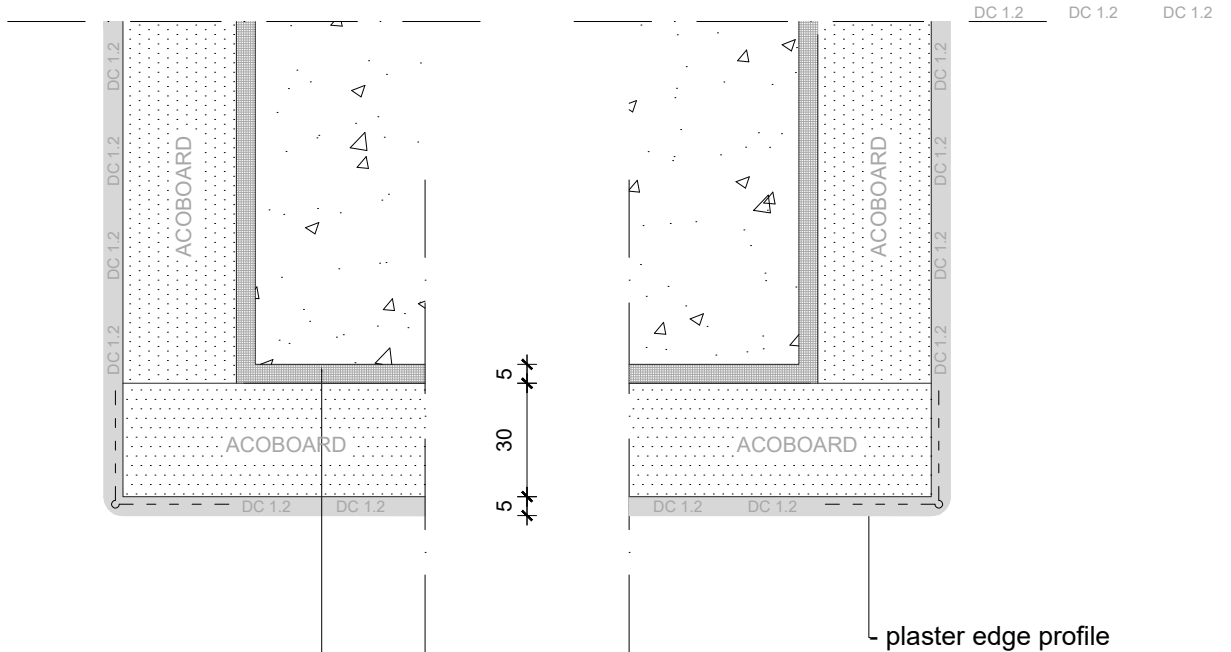
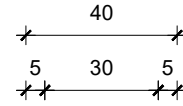
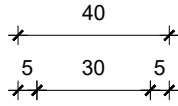
- metal-stud w. sheetrock  
concrete or eq
- board adhesive
- mineral wool board
- Acospray DC1

**NOTE:**

- Acosorb products always need to be applied accordingly to the instructions by Acosorb on clean, dry and non expanding surfaces like concrete, gypsum or eq  
 Dimensions of profiles and other products depends on the applied thickness of Acosorb product.

Product:	ACOSPRAY DC 1 2.0 CEILING Item RECESSED	Date:	V1.0 2019	info@acosorb.com
Scale:	1:2	Drawn by:	ACOSORB	WWW.ACOSORB.COM
Papersize:	A4			 seamless acoustical spray- and plasterwork


\* These details are basic principle drawings. This drawing does not function as or will replace any execution drawings.  
 The client or contractor is responsible for the correct application of the product. All dimensions need to be checked by client or contractor.



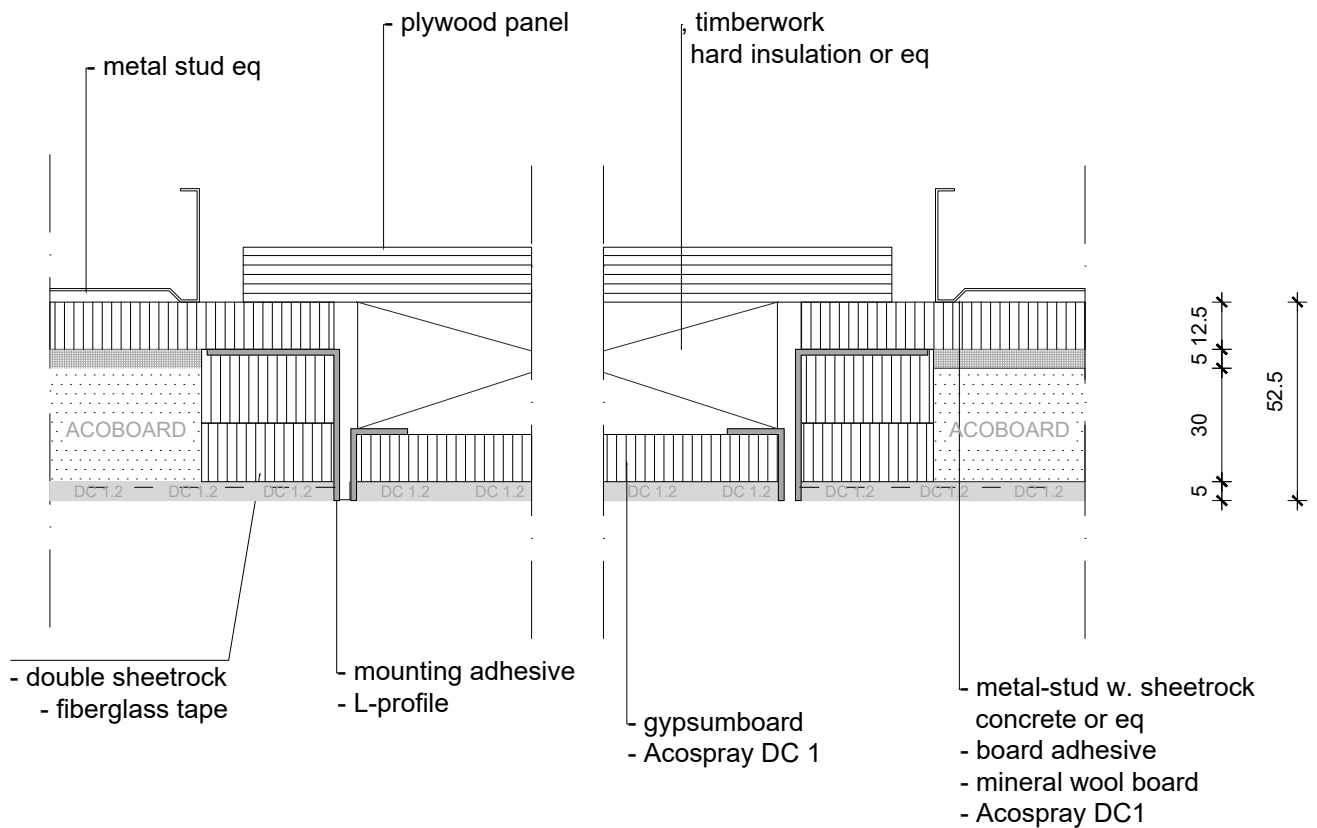
- metal-stud w. sheetrock
- concrete or eq
- board adhesive
- mineral wool board
- Acospray DC1

**NOTE:**

- Acosorb products always need to be applied accordingly to the instructions by Acosorb on clean, dry and non expanding surfaces like concrete, gypsum or eq  
 Dimensions of profiles and other products depends on the applied thickness of Acosorb product.


Product:	ACOSPRAY DC 1 2.0 BULKHEAD EDGE	Date:	V1.0 2019	info@acosorb.com
Scale:	1:2	Drawn by:	ACOSORB	WWW.ACOSORB.COM
Papersize:	A4			 seamless acoustical spray- and plasterwork

\* These details are basic principle drawings. This drawing does not function as or will replace any execution drawings.  
 The client or contractor is responsible for the correct application of the product. All dimensions need to be checked by client or contractor.

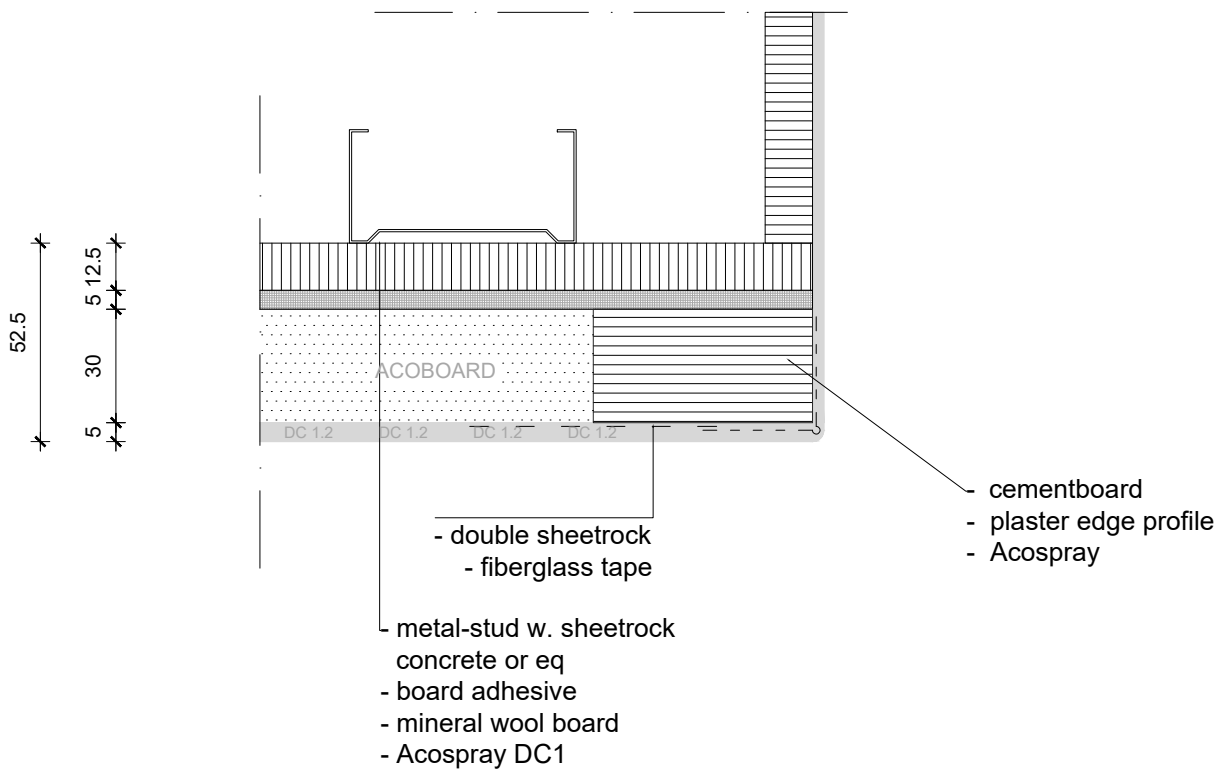


**NOTE:**

- Acosorb products always need to be applied accordingly to the instructions by Acosorb on clean, dry and non expanding surfaces like concrete, gypsum or eq  
Dimensions of profiles and other products depends on the applied thickness of Acosorb product.


Product:	ACOSPRAY DC 1 2.0 INSPECTION HATCH	Date:	V1.0 2019	info@acosorb.com
Scale:	1:2	Drawn by:	ACOSORB	WWW.ACOSORB.COM
Papersize:	A4			 seamless acoustical spray- and plasterwork

\* These details are basic principle drawings. This drawing does not function as or will replace any execution drawings.  
The client or contractor is responsible for the correct application of the product. All dimensions need to be checked by client or contractor.

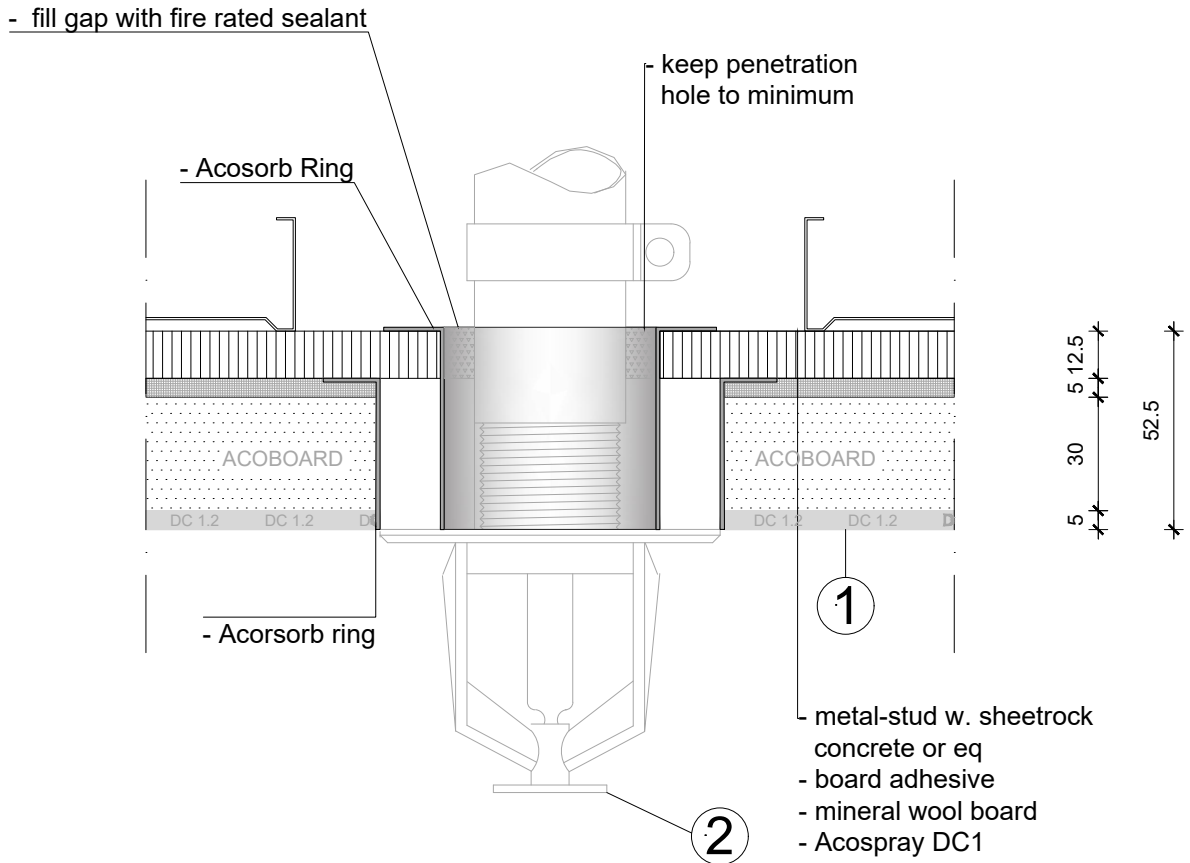


**NOTE:**

- Acosorb products always need to be applied accordingly to the instructions by Acosorb on clean, dry and non expanding surfaces like concrete, gypsum or eq  
 Dimensions of profiles and other products depends on the applied thickness of Acosorb product.

Product:	ACOSPRAY DC 1 2.0 ATRIUM / EDGE	Date:	V1.0 2019	info@acosorb.com
Scale:	1:2	Drawn by:	ACOSORB	WWW.ACOSORB.COM
Papersize:	A4			 seamless acoustical spray- and plasterwork

\* These details are basic principle drawings. This drawing does not function as or will replace any execution drawings.  
 The client or contractor is responsible for the correct application of the product. All dimensions need to be checked by client or contractor.



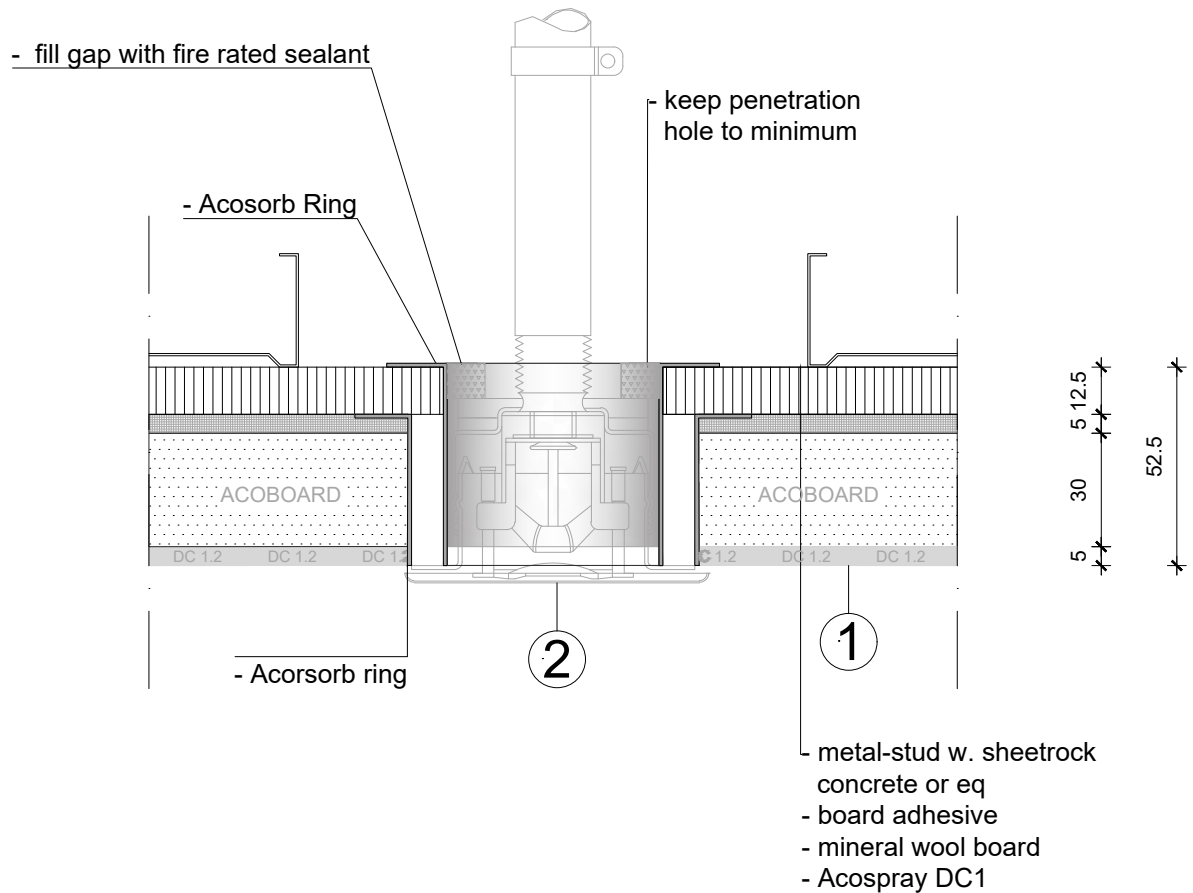
1 - spray ceiling  
2 - place accessory

**NOTE:**

- Acosorb products always need to be applied accordingly to the instructions by Acosorb on clean, dry and non expanding surfaces like concrete, gypsum or eq  
Dimensions of profiles and other products depends on the applied thickness of Acosorb product.

Product: ACOSPRAY DC 1 2.0 SPRINKLER	Date: V1.0 2019	info@acosorb.com	
Scale: 1:2	Drawn by: ACOSORB	WWW.ACOSORB.COM	
Papersize: A4			


\* These details are basic principle drawings. This drawing does not function as or will replace any execution drawings.  
The client or contractor is responsible for the correct application of the product. All dimensions need to be checked by client or contractor.



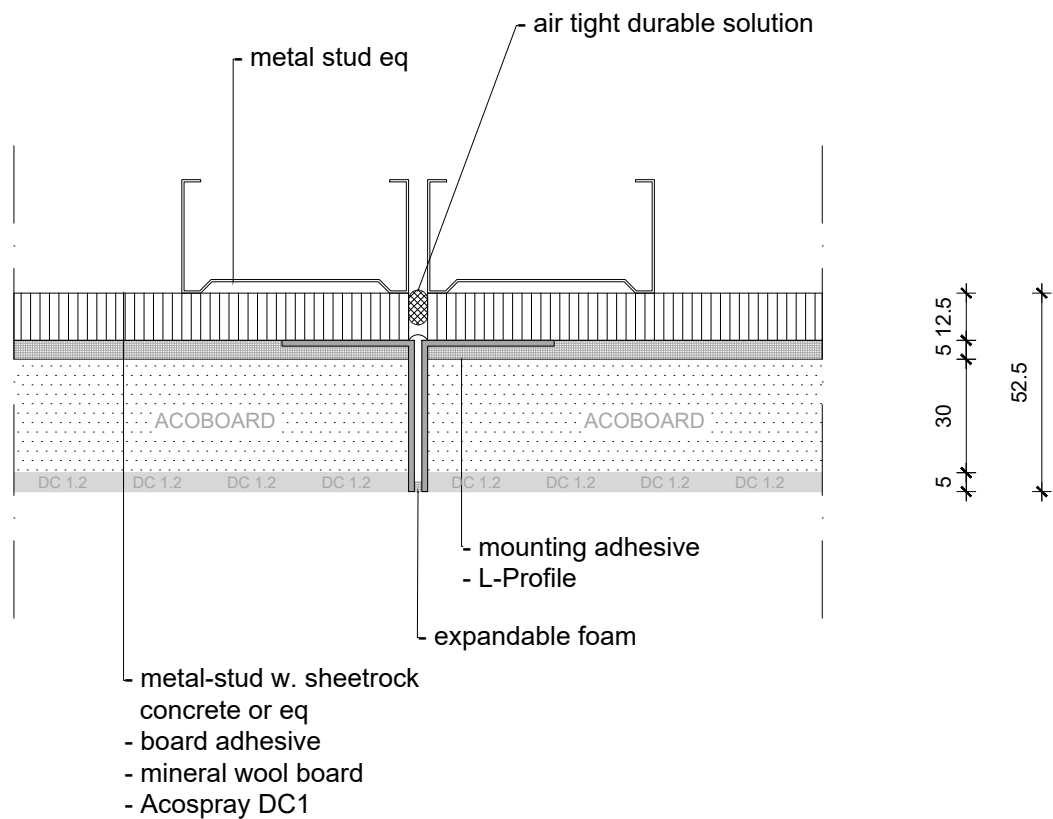
1 - spray ceiling  
2 - place accessory

**NOTE:**

- Acosorb products always need to be applied accordingly to the instructions by Acosorb on clean, dry and non expanding surfaces like concrete, gypsum or eq  
Dimensions of profiles and other products depends on the applied thickness of Acosorb product.


Product:	ACOSPRAY DC 1 2.0 SPRINKLER RECESSER	Date:	V1.0 2019	info@acosorb.com
Scale:	1:2	Drawn by:	ACOSORB	WWW.ACOSORB.COM
Papersize:	A4	 seamless acoustical spray- and plasterwork		

\* These details are basic principle drawings. This drawing does not function as or will replace any execution drawings.  
The client or contractor is responsible for the correct application of the product. All dimensions need to be checked by client or contractor.

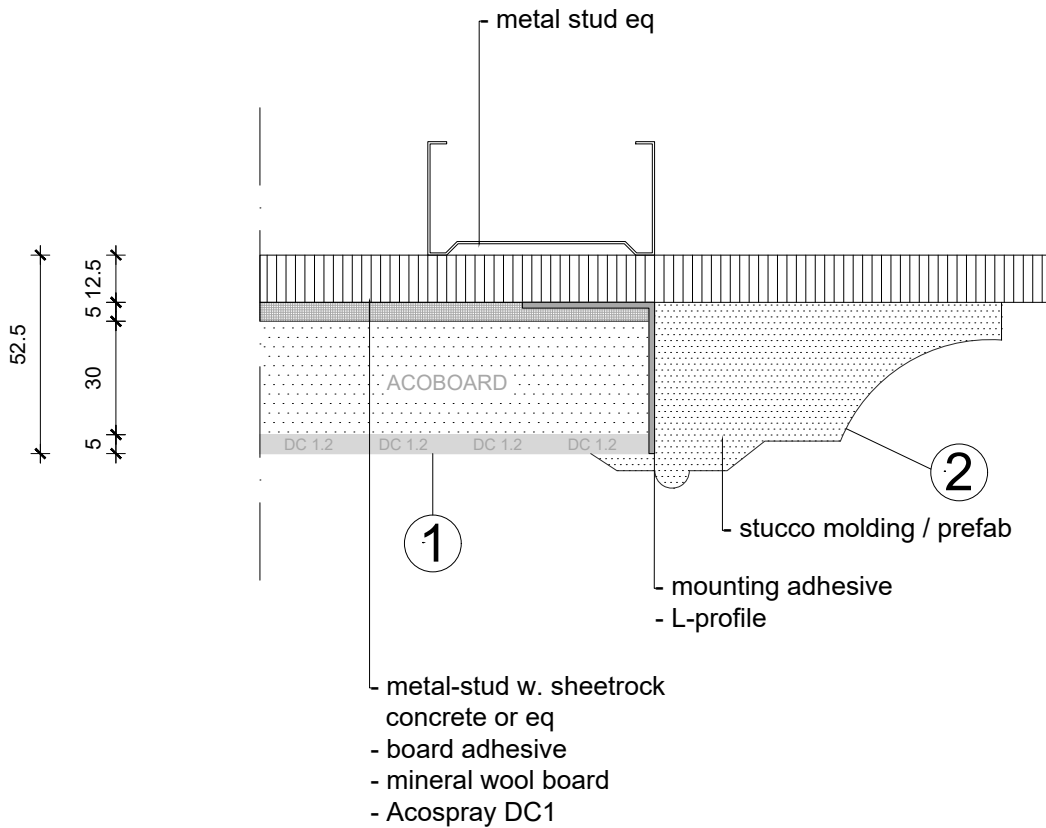


**NOTE:**

- Acosorb products always need to be applied accordingly to the instructions by Acosorb on clean, dry and non expanding surfaces like concrete, gypsum or eq  
Dimensions of profiles and other products depends on the applied thickness of Acosorb product.

Product:	ACOSPRAY DC 1 2.0 EXPANSION JOINT	Date:	V1.0 2019	info@acosorb.com
Scale:	1:2	Drawn by:	ACOSORB	WWW.ACOSORB.COM
Papersize:	A4	 seamless acoustical spray- and plasterwork		


\* These details are basic principle drawings. This drawing does not function as or will replace any execution drawings.  
The client or contractor is responsible for the correct application of the product. All dimensions need to be checked by client or contractor.



1 - spray ceiling  
2 - mount stucco-profile

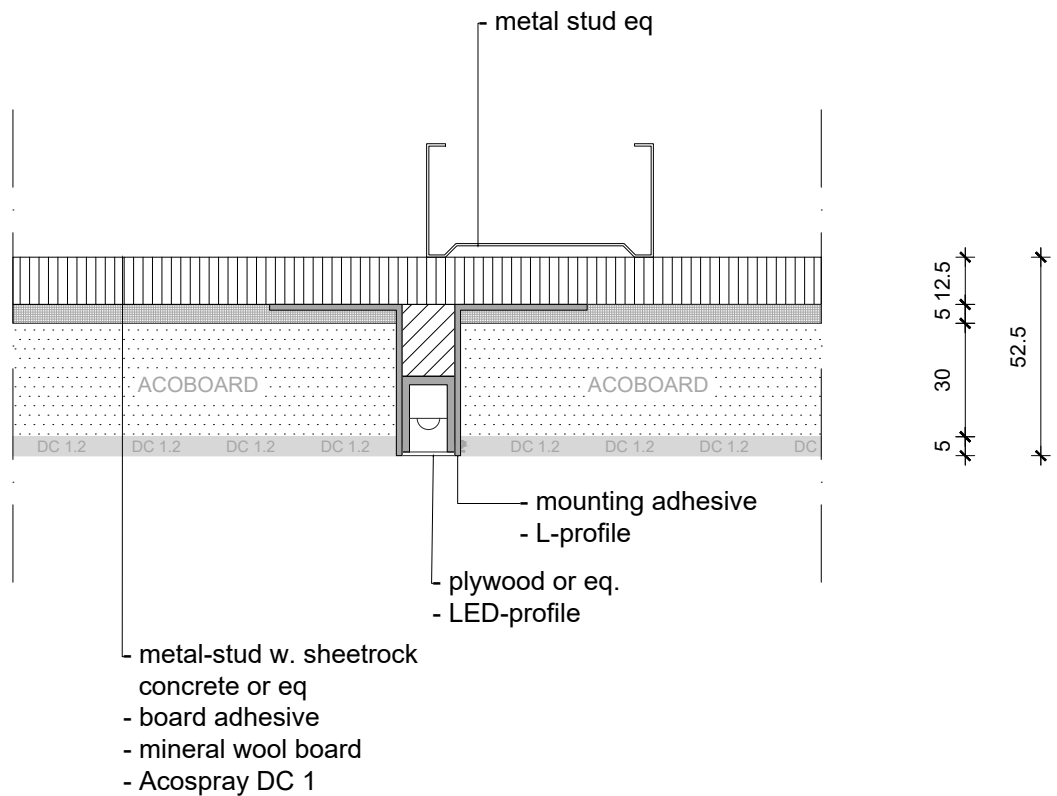
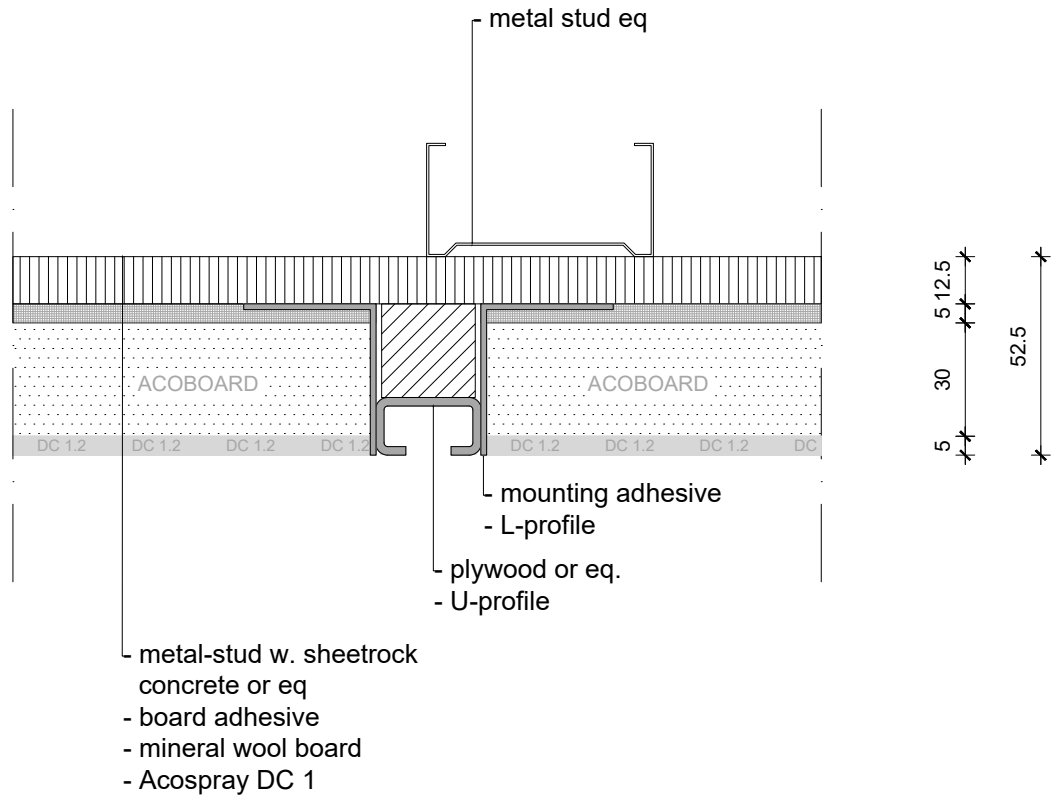
**NOTE:**

- Acosorb products always need to be applied accordingly to the instructions by Acosorb on clean, dry and non expanding surfaces like concrete, gypsum or eq  
Dimensions of profiles and other products depends on the applied thickness of Acosorb product.

Product:	ACOSPRAY DC 1 2.0 STUCCO MOLDING / PREFAB	Date:	V1.0 2019	info@acosorb.com
Scale:	1:2	Drawn by:	ACOSORB	WWW.ACOSORB.COM
Papersize:	A4	 seamless acoustical spray- and plasterwork		


\* These details are basic principle drawings. This drawing does not function as or will replace any execution drawings. The client or contractor is responsible for the correct application of the product. All dimensions need to be checked by client or contractor.



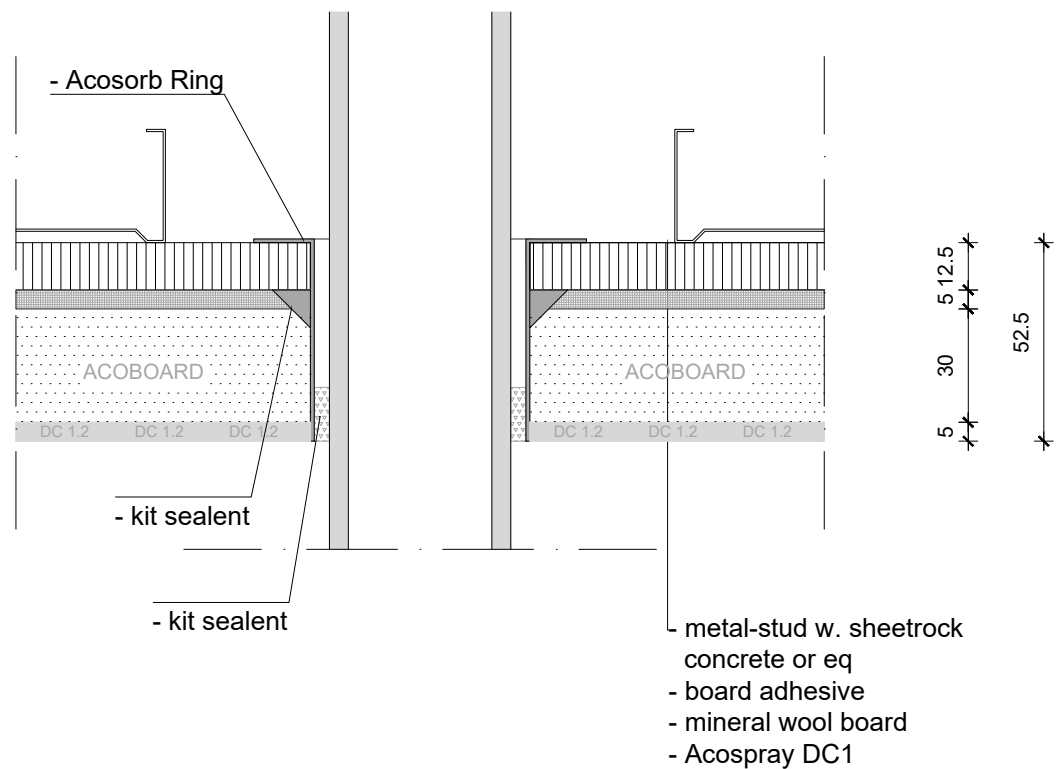


**NOTE:**

- Acosorb products always need to be applied accordingly to the instructions by Acosorb on clean, dry and non expanding surfaces like concrete, gypsum or eq  
Dimensions of profiles and other products depends on the applied thickness of Acosorb product.


Product:	ACOSPRAY DC 1 2.0 U-PROFILE, LIGHT/LED LINE	Date:	V1.0 2019	info@acosorb.com
Scale:	1:2	Drawn by:	ACOSORB	WWW.ACOSORB.COM
Papersize:	A4			 seamless acoustical spray- and plasterwork

\* These details are basic principle drawings. This drawing does not function as or will replace any execution drawings.  
The client or contractor is responsible for the correct application of the product. All dimensions need to be checked by client or contractor.

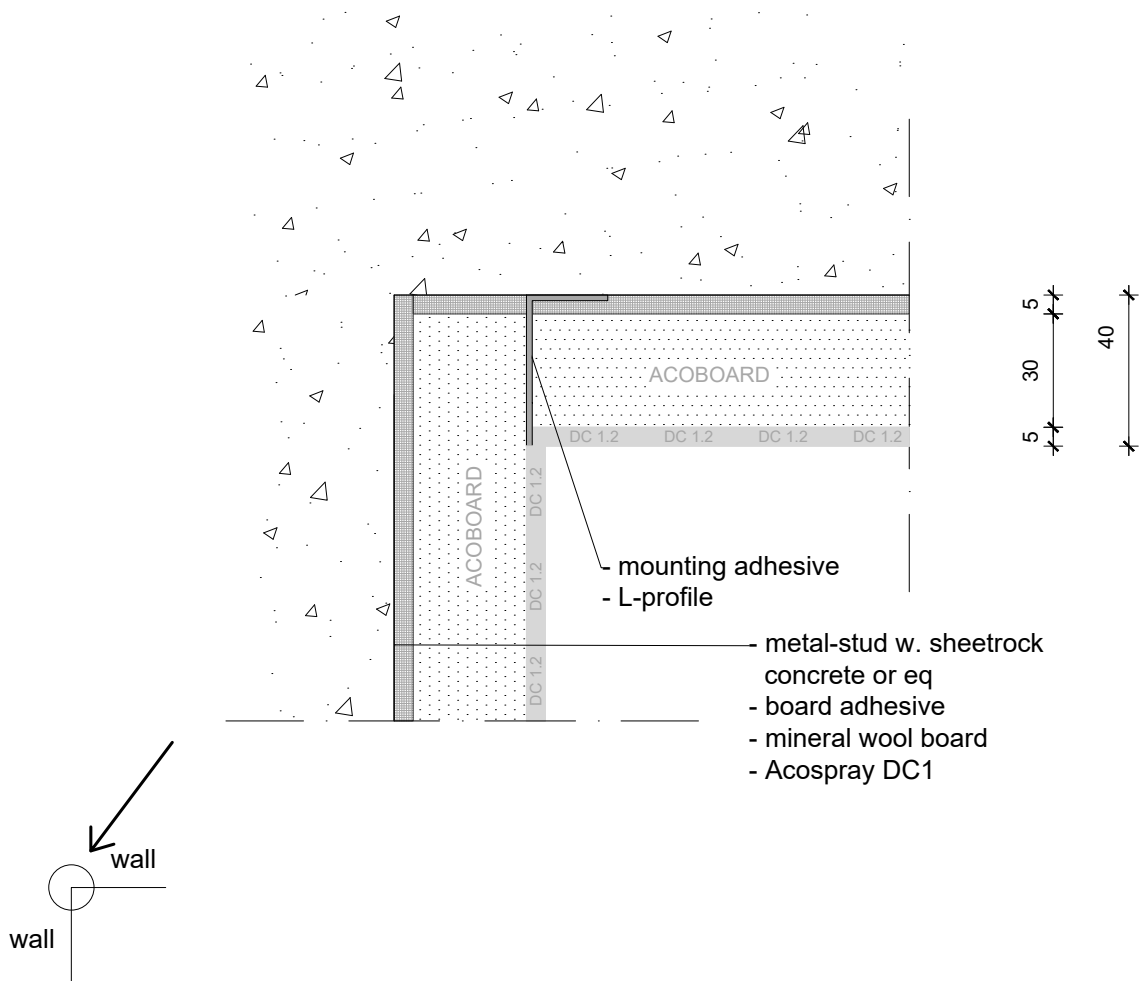


**NOTE:**

- Acosorb products always need to be applied accordingly to the instructions by Acosorb on clean, dry and non expanding surfaces like concrete, gypsum or eq  
Dimensions of profiles and other products depends on the applied thickness of Acosorb product.

Product:	ACOSPRAY DC 1 2.0 TUBE TRANSIT	Date:	V1.0 2019	info@acosorb.com
Scale:	1:2	Drawn by:	ACOSORB	WWW.ACOSORB.COM
Papersize:	A4			 seamless acoustical spray- and plasterwork


\* These details are basic principle drawings. This drawing does not function as or will replace any execution drawings.  
The client or contractor is responsible for the correct application of the product. All dimensions need to be checked by client or contractor.



HORIZONTAL DETAIL!

**NOTE:**

- Acosorb products always need to be applied accordingly to the instructions by Acosorb on clean, dry and non expanding surfaces like concrete, gypsum or eq  
 Dimensions of profiles and other products depends on the applied thickness of Acosorb product.

Product:	ACOSPRAY DC 1 2.0 HORIZONTAL DETAIL	Date:	V1.0 2019	info@acosorb.com
Scale:	1:2	Drawn by:	ACOSORB	WWW.ACOSORB.COM
Papersize:	A4			 seamless acoustical spray- and plasterwork

\* These details are basic principle drawings. This drawing does not function as or will replace any execution drawings.  
 The client or contractor is responsible for the correct application of the product. All dimensions need to be checked by client or contractor.